



VeraCrypt

Installation Guide and Demo



Contents

1. [Download and Installation](#)
2. [Creating a VeraCrypt Volume](#)
3. [Mounting a VeraCrypt Volume](#)
 - [Mounting TrueCrypt volumes using VeraCrypt](#)
4. [Dismounting a VeraCrypt Volume](#)

Download and Installation

1. Download the latest VeraCrypt installation file [here](#). Select a version that is supported by your operating system.
2. Double-click/Run the downloaded executable file. The VeraCrypt Installer should open.
3. Accept the license terms and click 'Next'.
4. In the next step, the 'Install' option is selected by default. Keep this selection and click 'Next'.

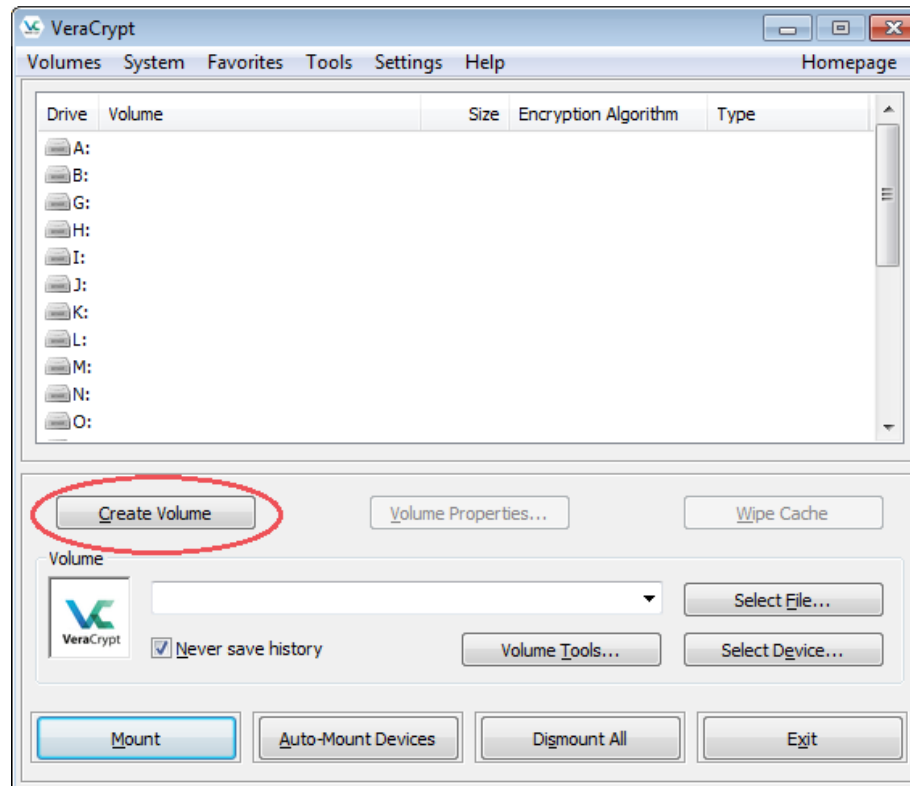
The 'Extract' option allows you to use VeraCrypt in portable mode. You need system administrator privileges to run VeraCrypt in portable mode each time you launch it. To learn more, click [here](#).

5. Click 'Install' and wait until you get a prompt telling you that installation has successfully completed. Click 'OK' and then 'Finish'. VeraCrypt is now installed on your system.

Creating a VeraCrypt Volume

Step I:

Launch VeraCrypt and click on the 'Create Volume' button as highlighted in the snapshot.



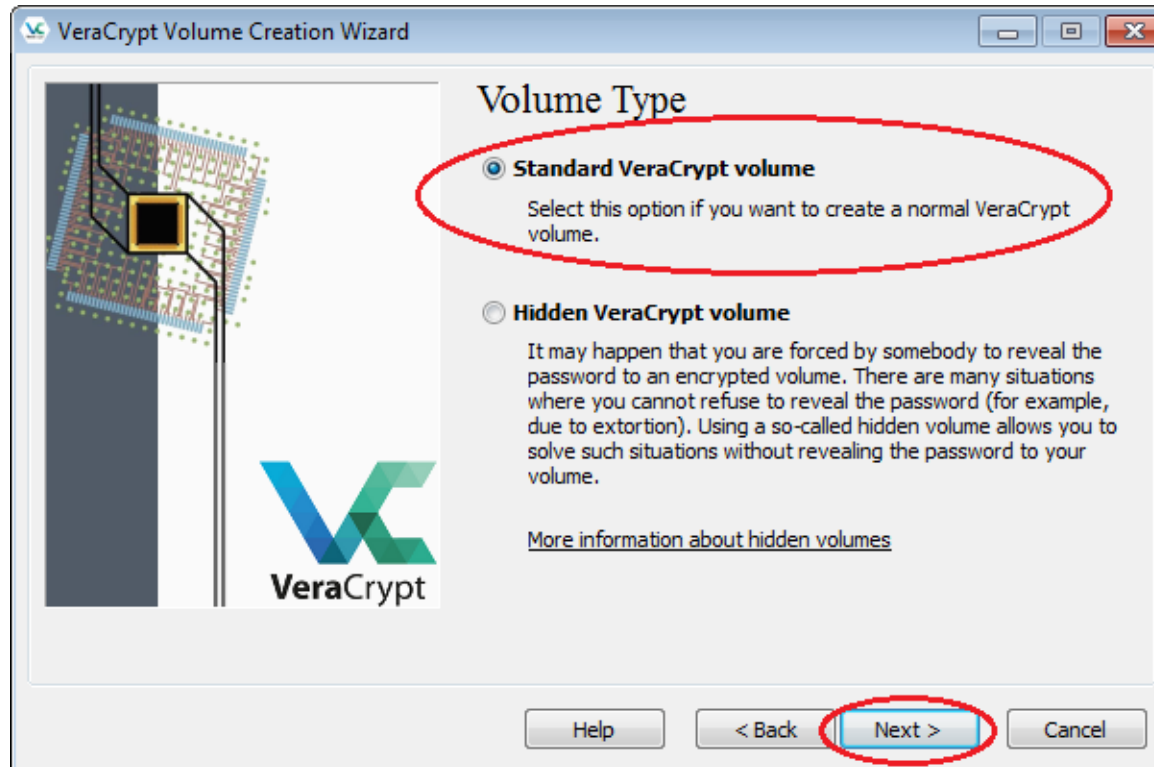
Step II:

The 'Create an encrypted file container' option is selected by default. Keep this selection and click on next.



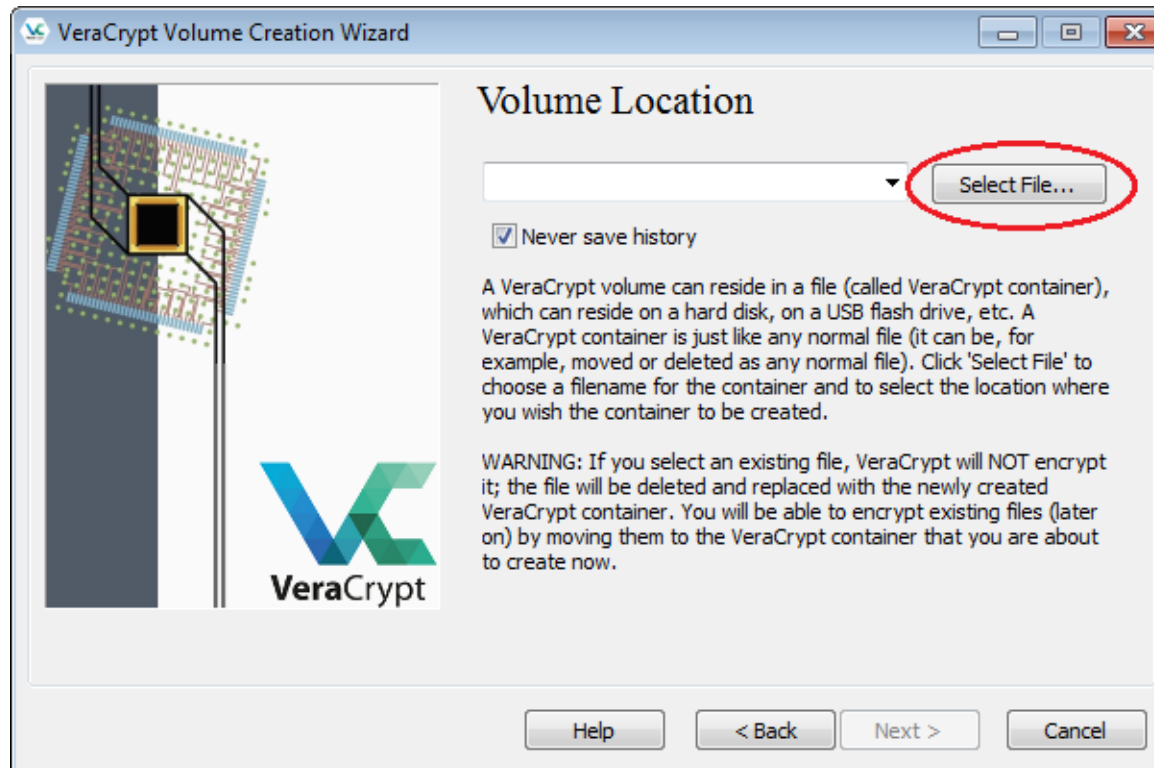
Step III:

Select 'Standard VeraCrypt volume' and proceed.



Step IV:

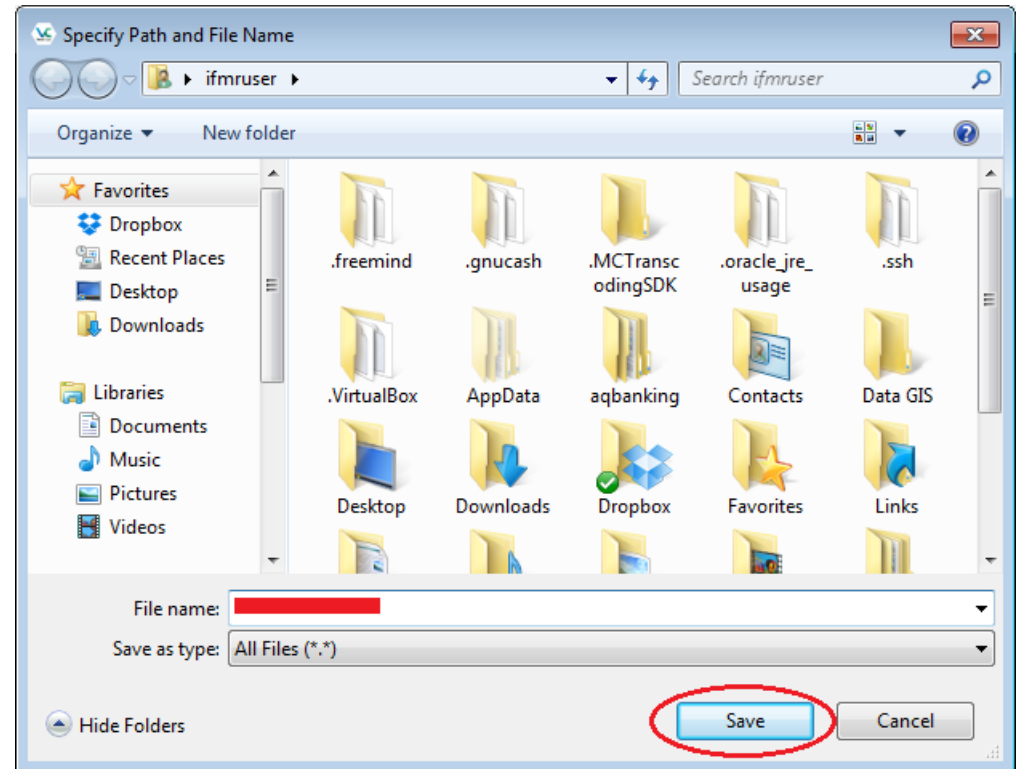
Create a new VeraCrypt volume by clicking on the select file option.



Step IV (cont):

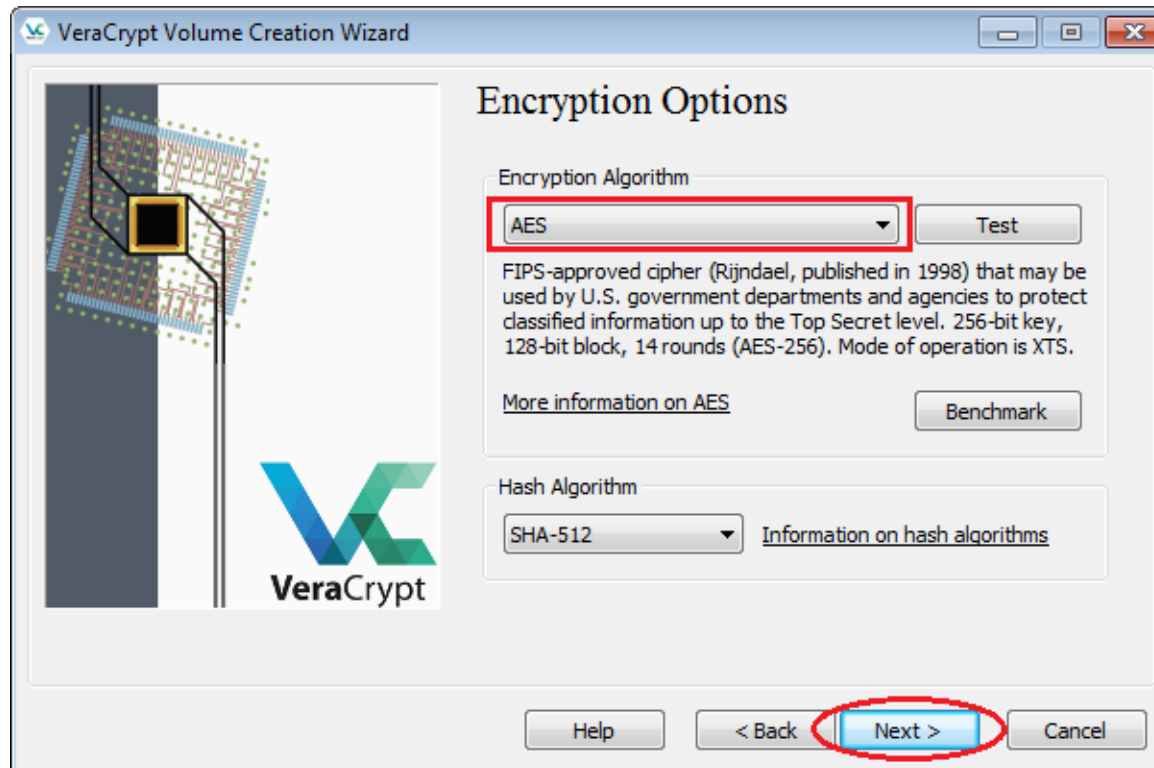
- Once the file selector opens, go to the location where you want to store the new VeraCrypt volume.
- Give the desired name to the volume in the 'File name' box and click 'Save'.
- Click 'Next' on the VeraCrypt window.

Note that VeraCrypt will not encrypt any existing files (when creating a new volume). If you select an existing file in this step, it will be overwritten and replaced by the newly created volume (so the overwritten file will be lost, not encrypted).



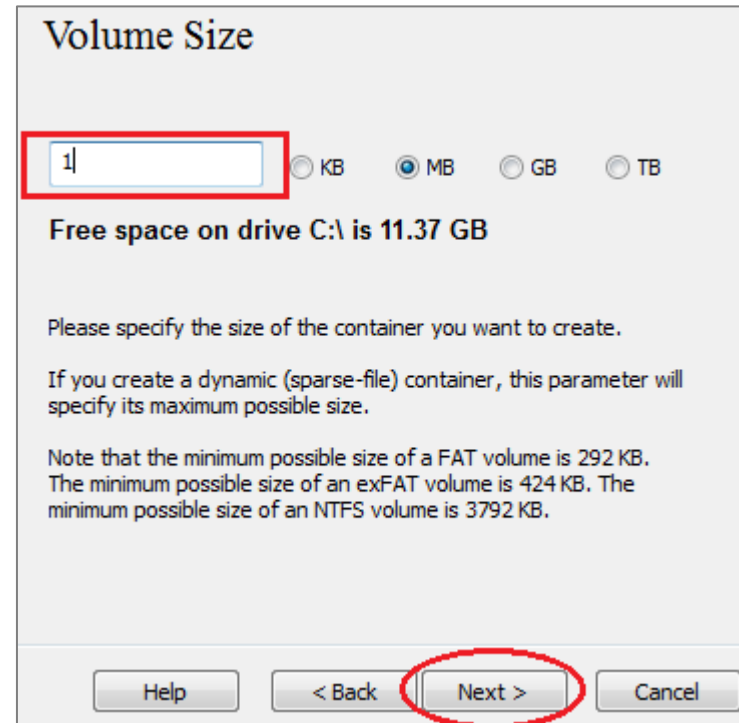
Step V:

Leave the default settings at this step (encryption algorithm is AES) and click 'Next'.



Step VI:

- Specify the size of the volume you want to create.
- Create a volume large enough to store all your data to avoid having to use multiple encrypted volumes.



Step VII:

- Read the instructions given in the window carefully.
- Create a strong password, preferably longer than 20 characters and store it in a secure location like [LastPass](#).

Try using [random.org](#) to create strong, random alphanumeric passwords.

Volume Password

Password: LA20YqDNhW8h8RYREy2vG0ba

Confirm: LA20YqDNhW8h8RYREy2vG0ba|

Use keyfiles Keyfiles...

Display password

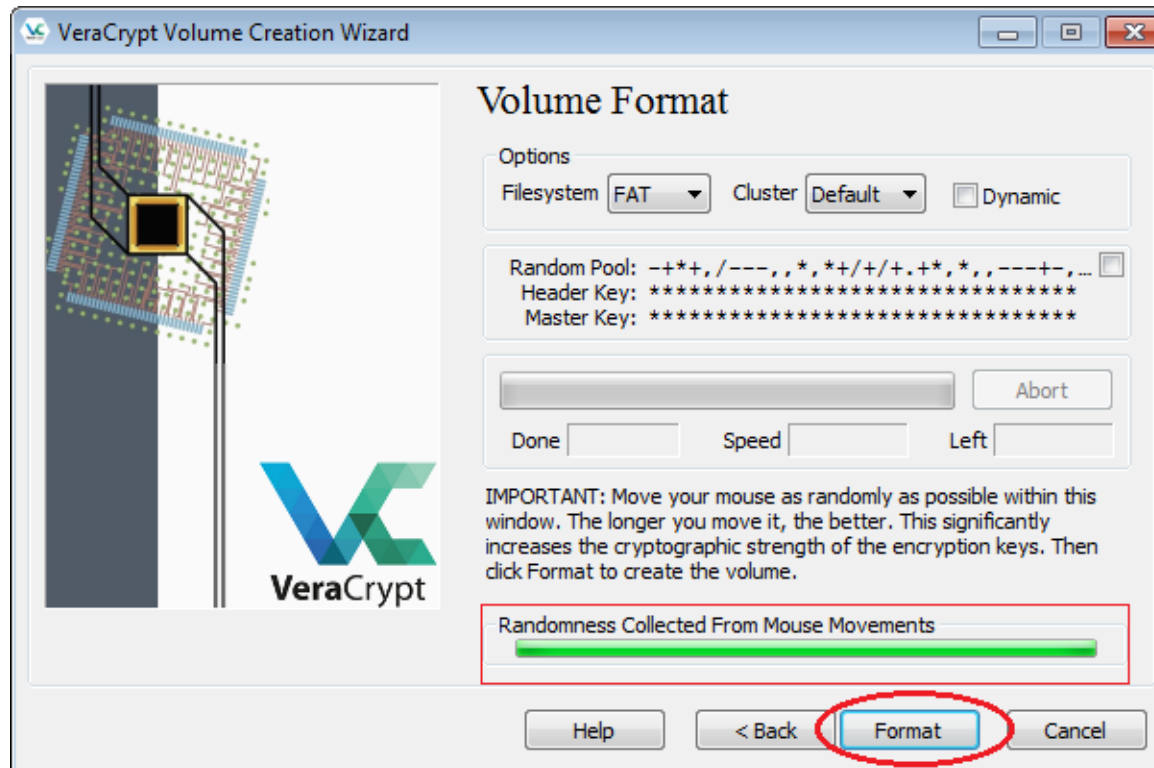
Use PIM

It is very important that you choose a good password. You should avoid choosing one that contains only a single word that can be found in a dictionary (or a combination of 2, 3, or 4 such words). It should not contain any names or dates of birth. It should not be easy to guess. A good password is a random combination of upper and lower case letters, numbers, and special characters, such as @ ^ = \$ * + etc. We recommend choosing a password consisting of 20 or more characters (the longer, the better). The maximum possible length is 64 characters.

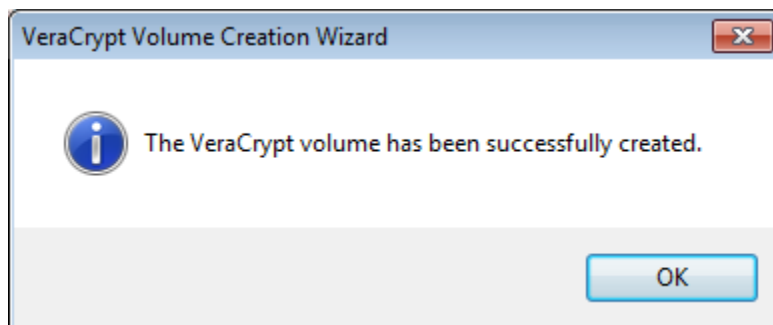
Help < Back Next > Cancel

Step VIII:

Leave the default settings. Move your mouse within the VeraCrypt window as randomly as possible until the randomness indicator turns completely green. Then, click 'Format'.



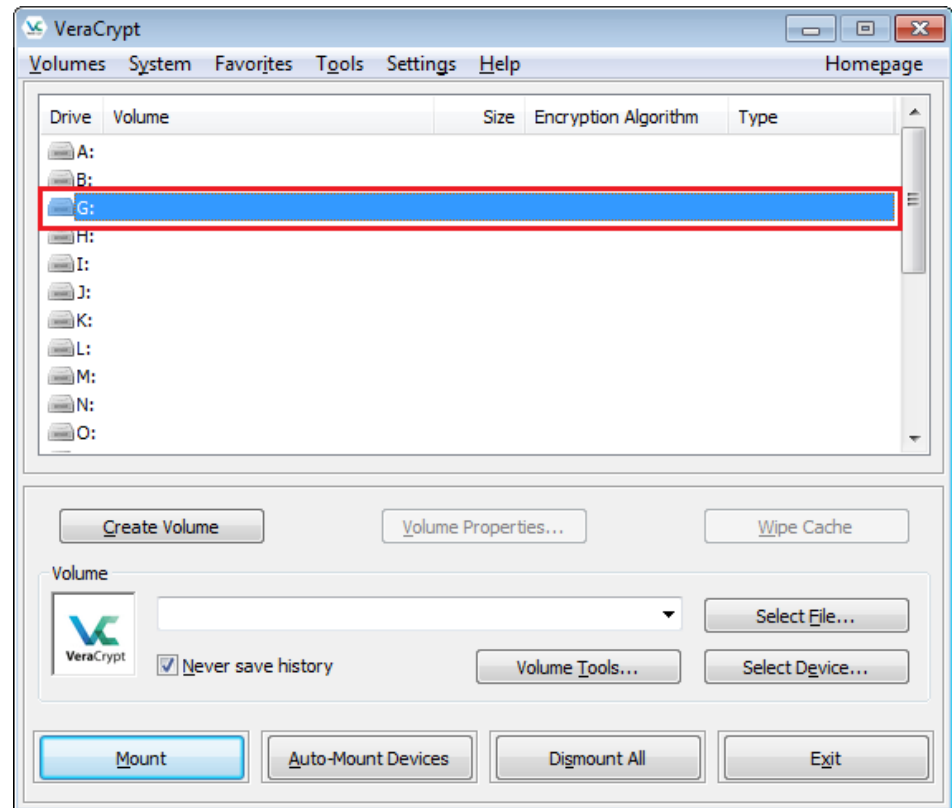
You will see a prompt telling you that a new volume has been created. At this point, if you don't want to create another VeraCrypt volume, click 'OK' and then 'Exit'.



Mounting a VeraCrypt Volume

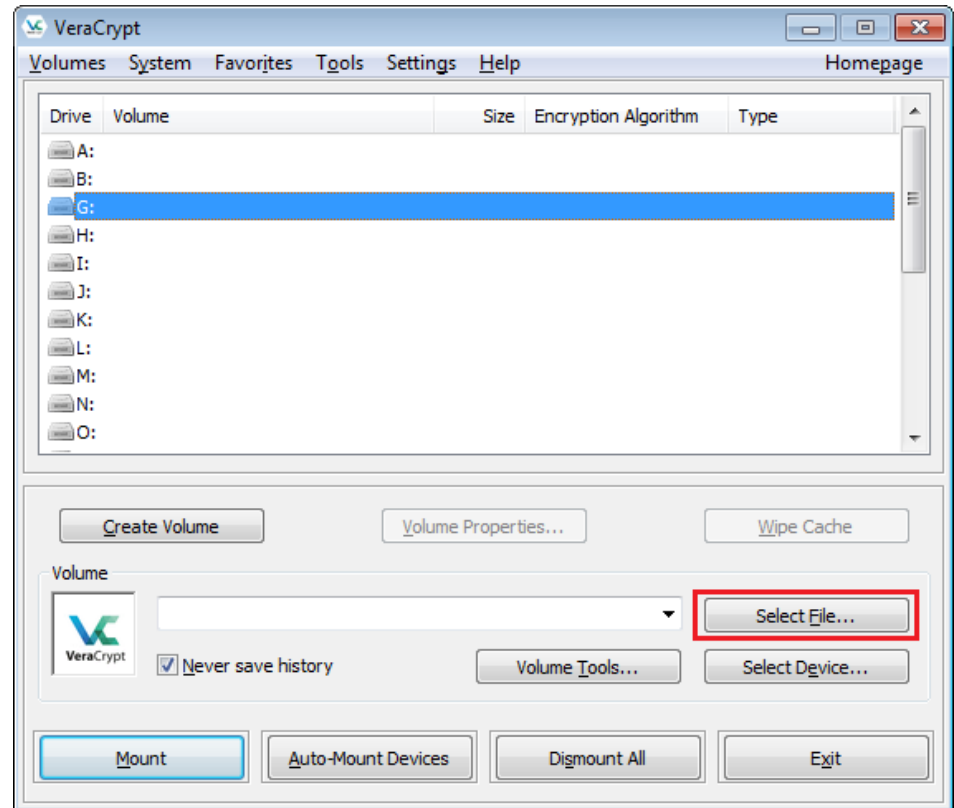
Step 1:

- Launch VeraCrypt.
- Select a drive letter to which you want to mount the VeraCrypt volume.
- You can select any drive letter. VeraCrypt only shows letters that are available in your system.



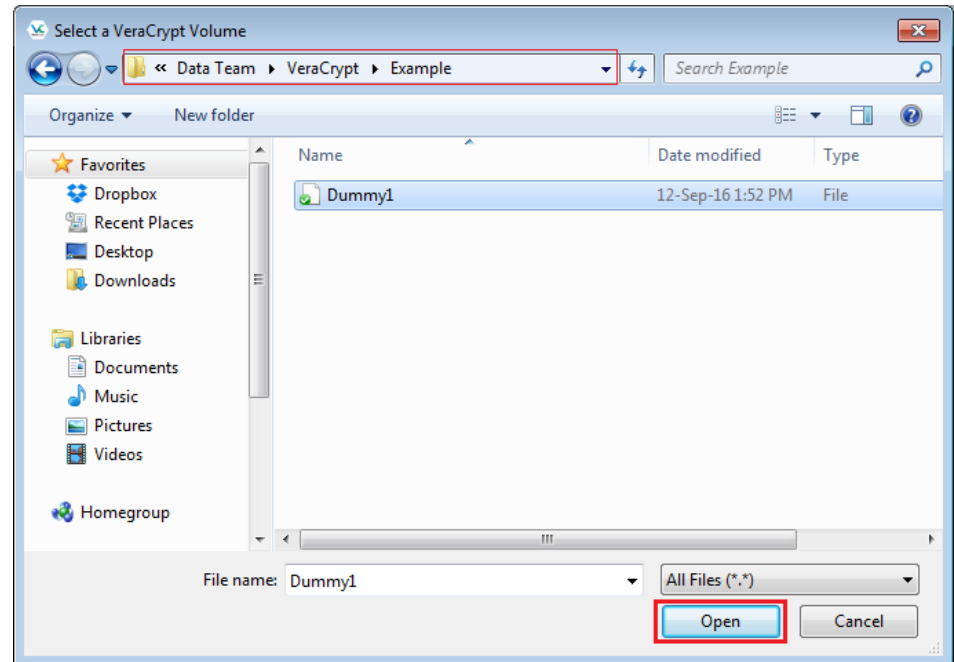
Step II:

Click 'Select File'. A file selector window will open.



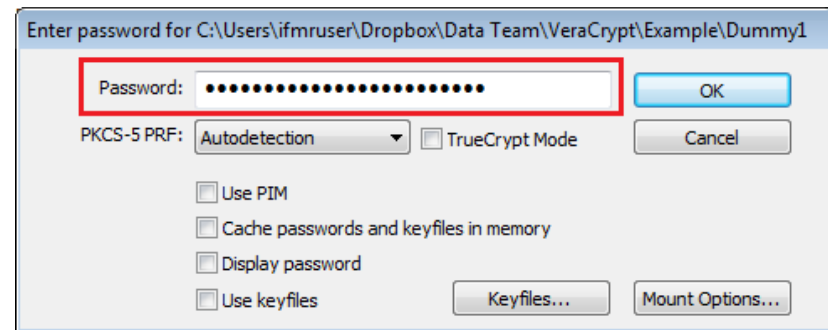
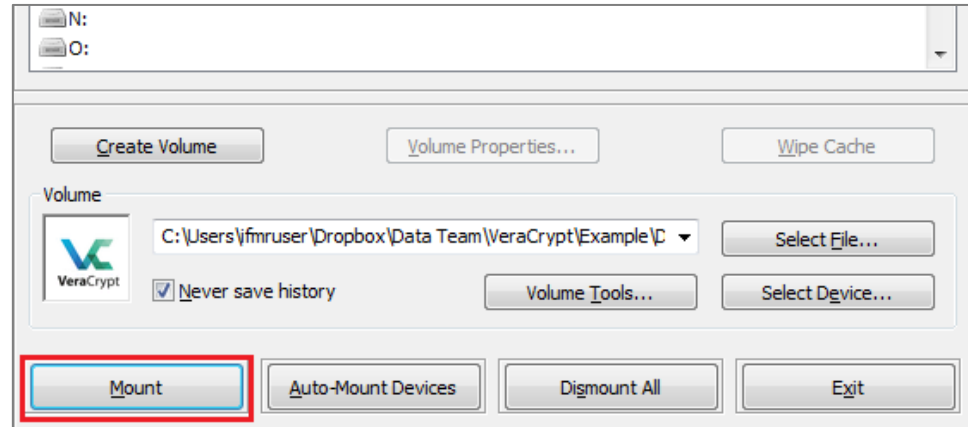
Step III:

- In the file selector, browse to the location where you have your VeraCrypt volume stored.
- Select the VeraCrypt volume and click 'Open'.



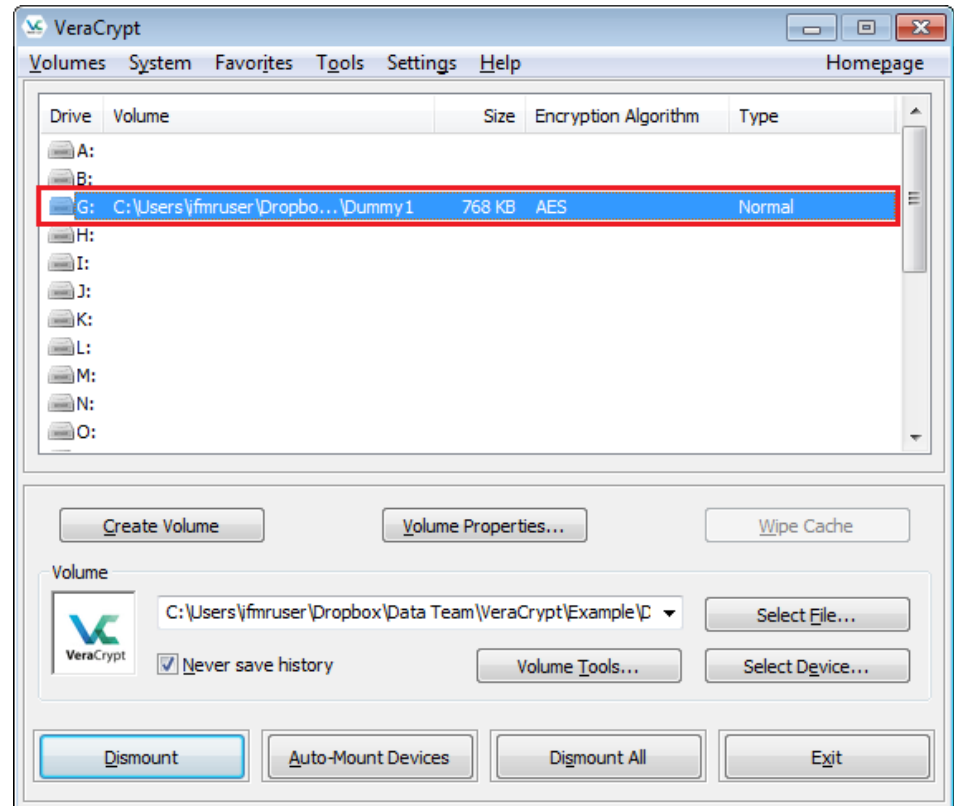
Step IV:

- Press the 'Mount' button.
- A password prompt will appear. Type the password in the password input field and click 'OK'.
- If you have entered your password correctly, the volume will be mounted.



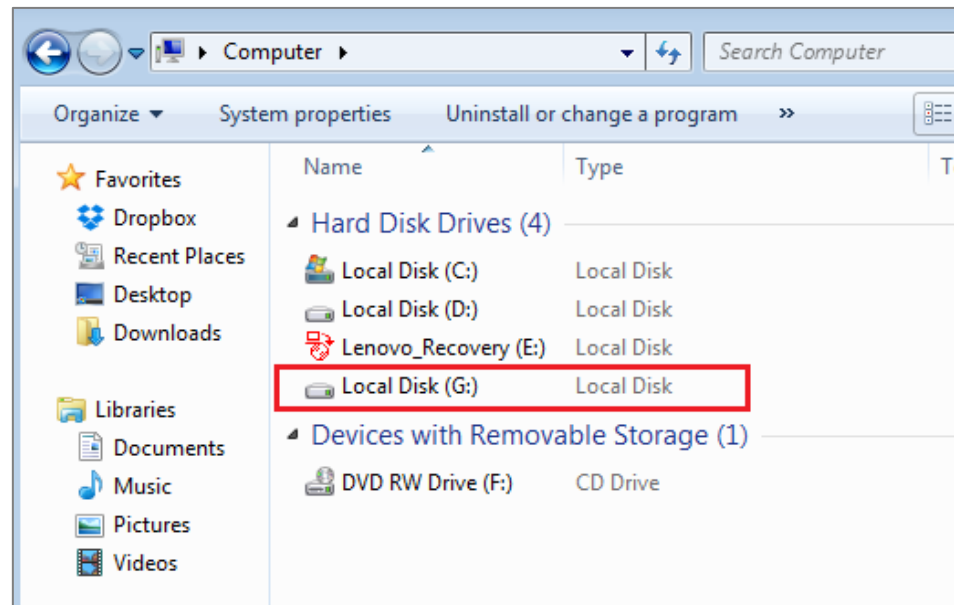
Step V:

The mounted volume can be opened by double clicking on the selected drive as shown in this screenshot.



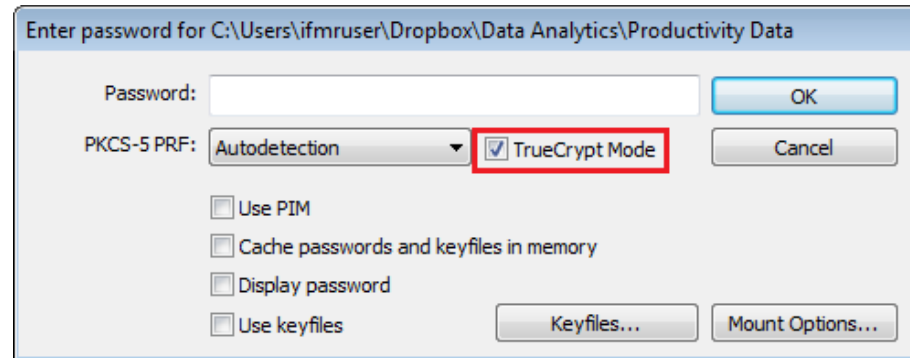
Step V (cont.):

- The mounted volume can also be found in the Computer (My Computer). It can be opened by double-clicking the corresponding drive letter.
- A mounted VeraCrypt volume behaves like a real disk. Files can be saved in this disk (copy, move etc.) as you would in any disk drive.
- Once mounted, files stored in a VeraCrypt volume can be directly accessed and worked upon.



Mounting TrueCrypt volumes using VeraCrypt:

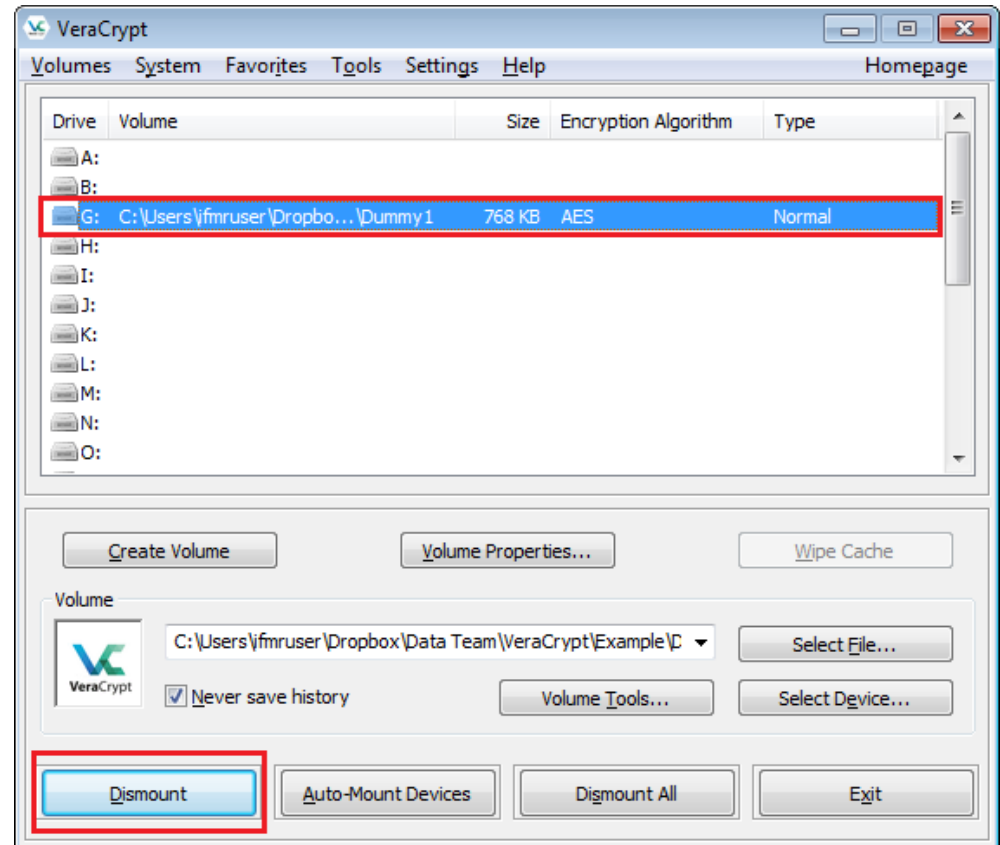
- VeraCrypt also allows you to load TrueCrypt volumes and partitions (created with versions 6.x and 7.x).
- Follow Steps I to III used above for mounting a VeraCrypt volume
- In step IV, check the 'TrueCrypt Mode' box in the password prompt, type in your password and click 'OK'



- The TrueCrypt volume is now mounted and can be opened by double clicking on the selected drive.

Dismounting a volume:

- To close the volume, select the drive from the list of mounted drives and click 'Dismount'.
- Note that the volume also gets dismounted if you restart your operating system.



For detailed documentation on VeraCrypt, click [here](#). To download a pdf version of the official user guide click [here](#).